

Slot.it - Felgenzuordnung

Angegeben ist der Felgenaussendurchmesser mit Steg + Breite der Felge ohne Flansch

Gruppe C + Modern LeMans hinten:

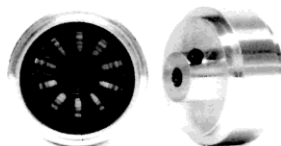
Slot.it Felgen **PA43-ALS** Ø16,5x8,2mm short Hub
Lancia LC2-85 / Toyota 88C /



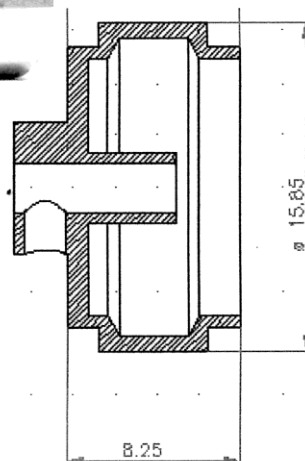
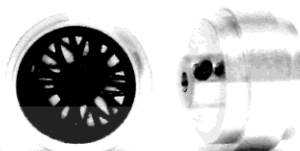
Slot.it Felgen **PA17-ALS** Ø15,8x8,2mm (short Hub)
Audi R8C / Jaguar XJR6 + 9 + 12/ Lancia LC2+85
Mazda 787 / Mercedes C9 / Porsche 956 + 962



Slot.it Felgen **PA18-ALS** Ø17,3x8,2mm



Slot.it Felgen **PA19-ALS** Ø17,3x10
Audi R8C reloaded / Ferrari F40 / Lola B09
McLaren F1 / Nissan R390 GT1 + LT



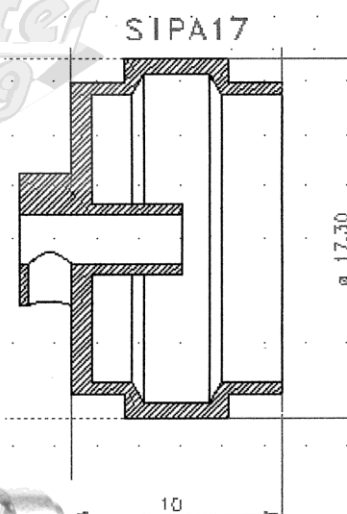
Gruppe C + Modern LeMans vorne:
PA15-PL Ø15,8x8,2mm Art. nicht mehr gelistet
Audi R8C

PA17-PL Ø15,8x8,2mm

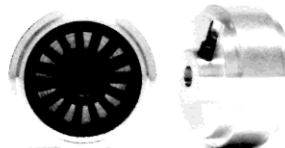
Jaguar XJR6 + 9 + 12 / Lancia LC2+85 / Mazda 787
Mercedes C9 / Porsche 956 + 962 / Toyota 88C



PA18-PL Ø17,3x8,2mm
Audi R8C reloaded / Ferrari F40 / Lola B09
McLaren F1 / Nissan R390 GT1 + LT

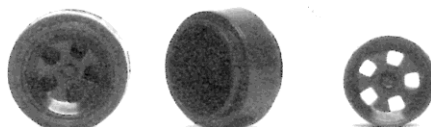


Classic hinten:
Slot.it Felgen **PA24-ALS** Ø16,5x8,2mm short Hub
Alfa T33/3 / Chaparral 2E / Ferrari 312PB
Ford Mk II + GT40



SIPA19

Classic vorne:
PA33-PL Ø14,3x8,0mm
Alfa T33/3 / Ferrari 312PB



PA17-PL Ø15,8x8,2mm
Chaparral 2E / Ford Mk II + GT40



Angaben basierend auf Teilleisten von slot.it
Stand Mai 2012